

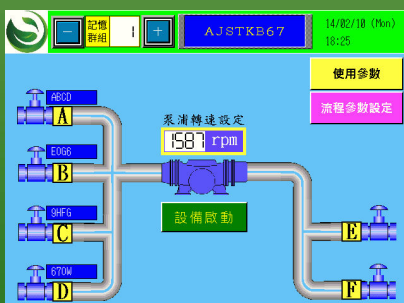
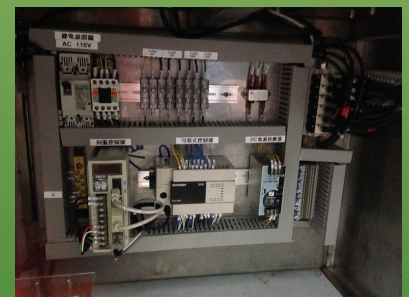
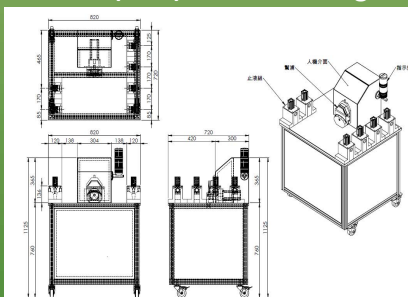
# INDUSTRIAL MACHINERY AND PROCESS CONTROL AUTOMATION DESIGN SERVICES ENERGY & CARBON SAVING ENGINEERING PLANNING SERVICES

Listen carefully to your needs

Providing high-quality service and dedication



- Login Privilege setting according to customer's preference.
  - Peristaltic pump / valve fluid transport planning and control processes.
  - Servo motor / automatic control with the feeder distribution board manufacture.
  - SUS304 / SUS316 / stainless steel trolley body and valve design with IP65/IP66 certificates of material.
  - Customized Human-Machine Interface (HMI) and Programmable Logic Control (PLC) systematically design services and supporting customers implement IQ/OQ validation for fulfilling the compliance requirements.
  - Automatically recording and backing up the complete operational data, formula and error messages during processes or any setting changes for FACILITAING customer's computerized systems compliance and validation using the GAMP5 Guide.
  - Mechanical piping and instrumentation diagram/drawing (P&ID) and 3D display module design architecture.
  - Energy and Carbon Saving engineering and integrating the needed components for building up a fully automation production process and environment.
  - Key Electrical Engineering Element Provider: INV inverter, POD man-machine interface, PLC programmable controller, SERVO motors, NFB no fuse breaker, MS electromagnetic switches and other needed electrical and electronic components.
- ✳ Customized Machinery and Automation integration services for Pharmaceutical and food production process applications: We are capable of integrating peristaltic pumps / pressure valves / alerts / pressure sensors / high precision Mass Flow Meter and Controller / size measuring gauges or load cells / pH meters / conductivity meters / UV spectral absorption detectors/ CO2 and O2 analyzers/ tanks for mixing air or liquid/ and other production machineries or devices for production and quality control monitor with well-designed optimized Human-Machine Interface (HMI) as well as Programmable Logic Control (PLC) Systems.



大久生物科技股份有限公司  
GRANDEVER BIOTECHNOLOGY CO., LTD.  
核心貢獻於電機和科學共同體  
Valuable contribution to the power and science community

11471 台北市內湖區新明路273巷6號1樓

1F., No. 6, Ln. 273, Xinming Rd., Neihu Dist., Taipei City 11471, Taiwan (R.O.C.)

TEL : +886-2-8792-3722

FAX : +886-2-8792-3761

E-Mail: info@grandever-biotech.com.tw

Website: www.grandever-biotech.com.tw